

T800 ACCESSORY SPEC BROCHURE



Getac (UK) Ltd.

Getac House, Stafford Park 12, Telford, Shropshire TF3 3BJ, United Kingdom
Tel : +44 (0) 1952 207 222 Sales-Getac-UK@getac.com | www.getac.com/en/

CARRY BAG

Features & Benefits

Constructed of durable Nylon/air mesh fabric, and featuring an adjustable padded shoulder strap, this compact carry bag provides sturdy protection for your tablet while giving maximum comfort. The zippered compartments with multi-functional pockets inside offer the optimal solution to transport the tablet and all of its accessories together in one case, delivering extra convenience and go-anywhere productivity to mobile professionals.

Product Information

Dimensions : L 255 x W 230 x H 123mm
Weight : 560g
Main Materials : Nylon, air mesh fabric

SKU ID

GMBCX3



SNAPBACK-SMARTCARD AND HF RFID READER RFID/NFC COMBO

Features & Benefits

This snap-on module is a 2-in-1 card reader that can read, Smart cards, (NFC) Near Field Communication and RFID (Radio-frequency identification) tags of 14443-A, 14443-B, and 15693 types

Product Information

Dimension : 195 x 150mm
Weight : 150g
Thickness : 14.5mm

SKU ID

GORSX2



SNAPBACK-SMARTCARD & MAGNETIC STRIP READER

Features & Benefits

This snapback with MSR is designed for access control applications. With simple installation, users can easily snap on the accessory. Moreover, this accessory has an IP65 rating, which means the snapback can be operated even in rain conditions.

Product Information

Dimension : 195 x 150mm
Weight : 175g
Thickness : 19mm

SKU ID

GOMSX1



SNAPBACK-SMART CARD & UHF RFID READER

Features & Benefits

This snap on module is a 2-in-1 card reader that can read: Smart cards, UHF RFID tags of EPC Class 1 Gen2 ISO18000-63 standards. It comes in two models for different regions: US (902~928MHz) and EU (865~868MHz) The UHF antenna is located at the center of the module. The maximum reading distance is determined by the design and size of individual tags.

Product Information

Dimension : 195 x 150mm
Weight : 215g
Thickness : 34mm

SKU ID

GORSX3 (US only) GORSX4 (EU only)



MAIN BATTERY

Features & Benefits

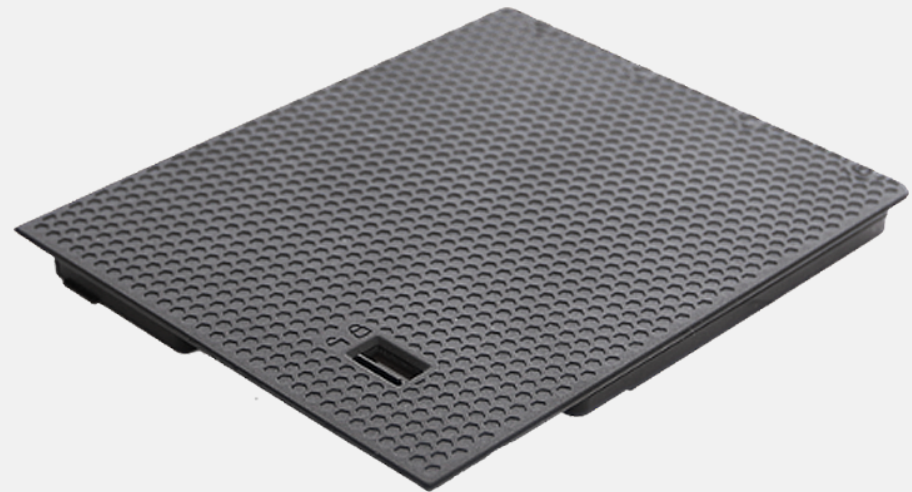
The T800 Main Battery is designed to provide a main power source for the device when the AC adapter is not connected/charged. The battery icon at the back of the battery pack changes appearance to display the current state of the battery. When the battery is low, it alerts users to take action as a reminder to help maintain optimal battery performance.

Product Information

Battery Type : Lithium-ion
Capacity : 7.4V, 4100mAh (31.08 Wh)
Battery Pack Weight : 215g

SKU ID

GBM4X1



MULTI-BAY EXPANDED BATTERY CHARGER 8 BAY

Features & Benefits

The 8-bay multi-battery charger is designed to charge multiple battery packs simultaneously and provide users an efficient charging solution.

Product Information

Dimension : L 465 x W 245 x H 95.3~111.3mm
Weight : 4.7 kg ,not including battery packs
AC Input : 100V~240V AC, 4.2A 50~60Hz
DC Output : 19.5V, 16.9A
* w / 330W AC Adapter
Number of charge bays : 8 bays

SKU ID

GCECEB (EU Power Cord)
GCECUB (US Power Cord)
GCECKB (UK Power Cord)
GCECAB (AU Power Cord)
GCECCB (CHN Power Cord)



SNAPBACK-EXTENSION BATTERY

Features & Benefits

This second battery pack is a snap-on module to provide T800 with extra battery power. The battery pack itself has an LED to display the estimated battery charge. Users can press the button to see the number of segments that light green.

Product Information

Battery Type : Lithium-ion
Nominal Voltage : 14.8V
Typical Capacity : 2100 mAh
Battery Pack Weight : 285g

SKU ID

GBS4X1



EXTERNAL DUAL BAY MAIN BATTERY CHARGER

Features & Benefits

This external dual-bay main battery charger is designed to charge up to 2 main batteries at the same time. It provides you the benefit of charging and storing the 2 main batteries together when there is limited space or power sockets.

Product Information

Dimension : L 160 x W 180 x H 72.5mm
Weight : 1.2kg
Number of LEDs : 5 per bay
AC-in power 100 V~240 V
DC Output 13.05 V, 2.4 A Max.
Number of charge bays : 2 bays

SKU ID

GCMCE5 (EU Power Cord)
GCMCU5 (US Power Cord)
GCMCK5 (UK Power Cord)
GCMCA5 (AU Power Cord)
GCMCC5 (CHN Power Cord)
GCMCT5 (TW Power Cord)



MULTI-BAY EXPANDED BATTERY DOCK 6 BAY

Features & Benefits

The 6-bay multi-battery dock is designed to charge multiple battery packs simultaneously and provide users an efficient charging solution.

Product Information

Dimension : L 465 x W 245 x H 162.5mm
Weight : 6.5kg (14.4lbs), not including battery packs
AC-in power 100 V~240 V ; 50~60Hz ; 4.5A
DC Output 19 V, 1.5~14.5 A
Number of charge bay : 6 Bay

SKU ID

GC6CE1 (EU Power Cord)
GC6CU1 (US Power Cord)
GC6CK1 (UK Power Cord)
GC6CA1 (AU Power Cord)



65W AC ADAPTER WITH POWER CORD

Features & Benefits

This adapter is designed to power the device and charge its internal battery from an AC power source. A country-specific power cord is included with the adapter to fit the local power outlet in your designated country.

Product Information

Input : 100V-240V, 50~60Hz, 1.5A
Output : 19V, 3.42A, 65W
Dimensions : L 108.3 x W 46.3 x H 30mm
Weight : 250g
Input cable length : 1830mm
Output cable length. : 1500mm

SKU ID

GAA6E5 (EU Power Cord)
GAA6U5 (US Power Cord)
GAA6K5 (UK Power Cord)
GAA6A5 (AU Power Cord)
GAA6C5 (CHN Power Cord)
GAA6T5 (TW Power Cord)
GAA6G5 (ARG Power Cord)
GAA6I5 (IN Power Cord)
GAA6J5 (JP Power Cord)
GAA6R5 (KR Power Cord)



OFFICE DOCK WITH AC ADAPTER

Features & Benefits

The Getac office dock brings out multiple I/O ports for connecting essential peripheral devices in the office environment. Through the integrated ethernet, HDMI, or USB connections, users can quickly collect and synchronize field data with central offices for real-time reporting and analytics.

Product Information

Dimension : 215mm x 170mm x 205mm

Weight : 1000g

Docking Connector : POGO

* w / 90W AC Adapter

I / O Ports :

DC in Jack x 1, Audio Output x 1, USB 2.0 x 3, USB3.0 x 1, VGA x 1, LAN x 1, HDMI x 1,
Microphone x 1, Kensington Lock x 1

SKU ID

GDOFEY (EU Power Cord)

GDOFUY (US Power Cord)

GDOFKY (UK Power Cord)

GDOFAY (AU Power Cord)

GDOFCY (CHN Power Cord)

GDOFTY (TW Power Cord)



90W MIL-STD-461 AC ADAPTER

Features & Benefits

This MIL-STD-461G AC adapter has passed the military standard and testing specification to ensure the conducted emissions (CE), conducted susceptibility (CS), radiated emissions (RE), and radiated susceptibility (RS) of the adapter can meet the requirements for the control of electromagnetic interference.

Product Information

Input : 115V-230V, 1.6A 50~60Hz
Output : 19V, 4.74A, 90W
Dimensions : L 170 x W 75 x H 45mm
Weight : 880g (without power cord)
Input cable length : 1530mm
Output cable length : 1800mm

SKU ID

GAAGE5 (EU Power Cord)
GAAGU5 (US Power Cord)
GAAGK5 (UK Power Cord)
GAAGC5 (CHN Power Cord)
GAAGA5 (AU Power Cord)
GAAGI5 (IN Power Cord)
GAAGT5 (TW Power Cord)



DIGITIZER PEN

Features & Benefits

The digitizer pen provides a more accurate and easy way for data entry and handwritten signature.

Product Information

Dimensions : 110.8 x Ø9.0mm

Tip size : 2.0 mm ; Ø1.65mm

Tether Length : 304mm

SKU ID

GMPDX7



CAPACITIVE STYLUS & TETHER

Features & Benefits

This adapter is designed to power the device and charge its internal battery from an AC power source. A country-specific power cord is included with the adapter to fit the local power outlet in your designated country.

Product Information

Stylus Dimensions : 107.5mm ; Ø9mm
Tip size : 3.8mm ; Ø3.5mm
Tether Length : 304mm

SKU ID

GMPSXG



PROTECTION FILM AG

Features & Benefits

This screen protection film is cut precisely to fit the T800 tablet and is easy to install and remove without leaving a sticky residue. With anti-glare coating, it not only protects the screen from the rigors of daily use but also helps to diffuse light on the screen and reduces glare, providing effortless readability for displayed information under common ambient lighting conditions.

Product Information

Dimensions : L 198.2 x W 140.2 x D 0.152mm
Main Material : PET

SKU ID

GMPFX8



SHOULDER STRAP 2-POINT

Features & Benefits

The 2-point shoulder strap provides a quick and comfortable handsfree carrying option of the T800. The strap length is adjustable by using the slide adjusters for height. Also, it fits most body sizes for both cross-body and shoulder carry.

Product Information

Length : 1740mm
Main Material : Nylon

SKU ID

GMS2X2



HAND STRAP

Features & Benefits

The adjustable strap is designed to keep the T800 secured to user's hand and easier to carry.

Product Information

Main part : 163.3 x 87.1 mm
Belt parts : 55mm (upper) ; 120mm (lower)
Main Material : PU

SKU ID

GMHSX9



WRIST STRAP

Features & Benefits

This wrist strap is designed to prevent accidental drops and provide extra hand support and stability while holding the T800 tablet with one hand.

Product Information

Length : 257mm
Material : Polyester

SKU ID

SKU ID



120W DC-DC VEHICLE ADAPTER

Features & Benefits

The 120W vehicle adapter comes with a choice of two types of connections: a bare wire with individual wire ends already stripped, and a cigarette lighter plug for easy connection to the cigarette lighter socket in the vehicle interior, providing a convenient way to charge and power your tablet while you are on the road.

Product Information

Input Voltage : 11VDC~ 32VDC

Output Voltage : 19VDC

Output current : 6.32A Max.

Case Dimensions : L 131.5 x W 65.6 x H 30mm

Weight : 362g

Input cable length : 1900mm

Output cable length : 1000mm

SKU ID

GAD2X4 (Cigarette Lighter Plug Version)

GAD2X8 (Bare Wire Version)

