

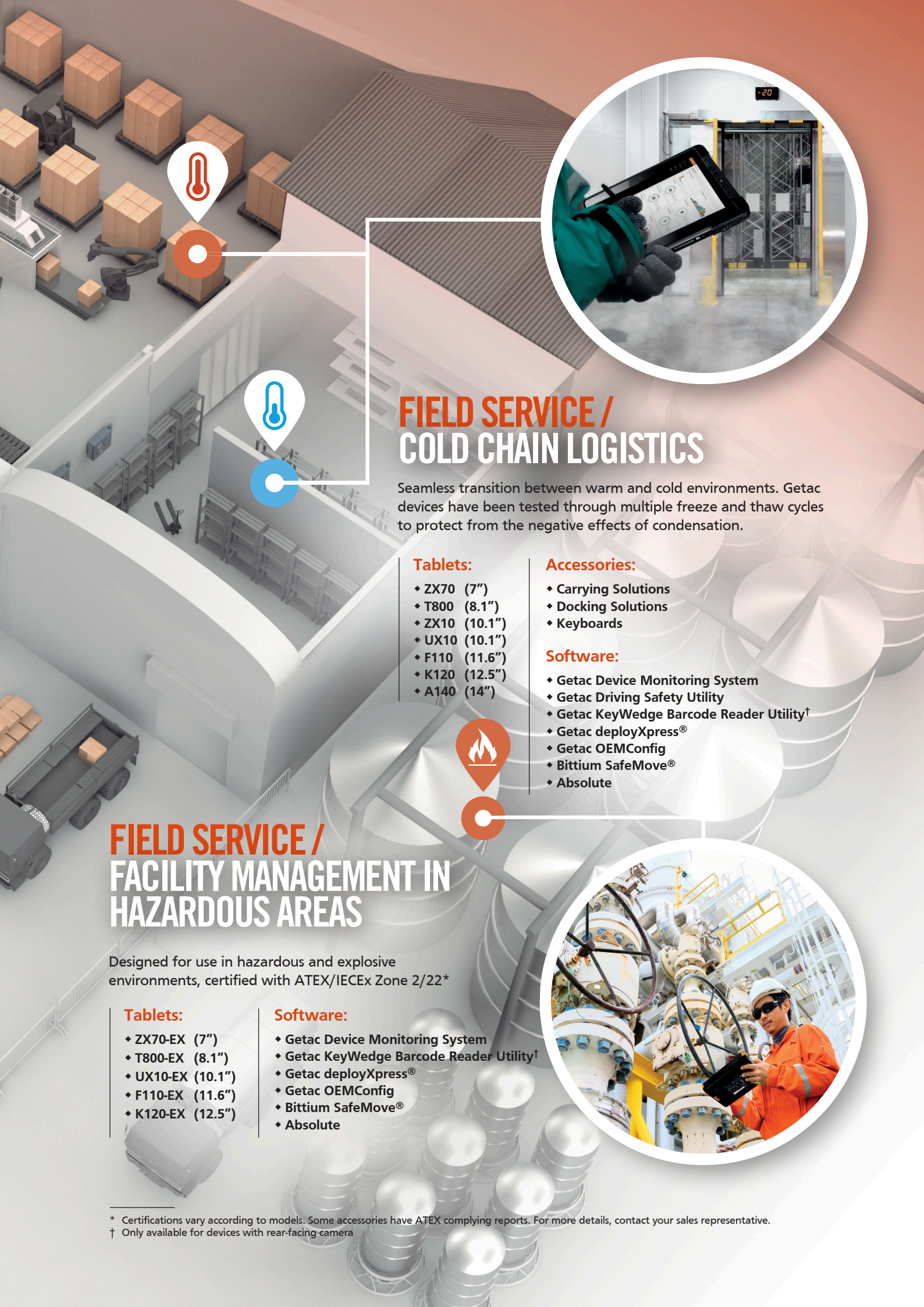
Getac

Rugged Mobile Computing Solutions

INDUSTRIAL MANUFACTURING



**RUGGED COMPUTING THAT BOOSTS YOUR
PRODUCTIVITY AND DRIVES EFFICIENCY**



FIELD SERVICE / COLD CHAIN LOGISTICS

Seamless transition between warm and cold environments. Getac devices have been tested through multiple freeze and thaw cycles to protect from the negative effects of condensation.

Tablets:

- ◆ ZX70 (7")
- ◆ T800 (8.1")
- ◆ ZX10 (10.1")
- ◆ UX10 (10.1")
- ◆ F110 (11.6")
- ◆ K120 (12.5")
- ◆ A140 (14")

Accessories:

- ◆ Carrying Solutions
- ◆ Docking Solutions
- ◆ Keyboards

Software:

- ◆ Getac Device Monitoring System
- ◆ Getac Driving Safety Utility
- ◆ Getac KeyWedge Barcode Reader Utility†
- ◆ Getac deployXpress®
- ◆ Getac OEMConfig
- ◆ Bittium SafeMove®
- ◆ Absolute



FIELD SERVICE / FACILITY MANAGEMENT IN HAZARDOUS AREAS

Designed for use in hazardous and explosive environments, certified with ATEX/IECEX Zone 2/22*

Tablets:

- ◆ ZX70-EX (7")
- ◆ T800-EX (8.1")
- ◆ UX10-EX (10.1")
- ◆ F110-EX (11.6")
- ◆ K120-EX (12.5")

Software:

- ◆ Getac Device Monitoring System
- ◆ Getac KeyWedge Barcode Reader Utility†
- ◆ Getac deployXpress®
- ◆ Getac OEMConfig
- ◆ Bittium SafeMove®
- ◆ Absolute



* Certifications vary according to models. Some accessories have ATEX complying reports. For more details, contact your sales representative.
† Only available for devices with rear-facing camera



SHOP FLOOR / PRODUCTION MANAGEMENT

Mobile performance monitoring for production tracking in real time or data input in extreme conditions and diverse applications.

Tablets:

- ◆ ZX70 (7")
- ◆ T800 (8.1")
- ◆ ZX10 (10.1")
- ◆ UX10 (10.1")
- ◆ F110 (11.6")
- ◆ K120 (12.5")
- ◆ A140 (14")

Laptops:

- ◆ B360 (13.3")
- ◆ S410 (14")

Accessories:

- ◆ Carrying Solutions
- ◆ Charging Solutions
- ◆ Docking Solutions
- ◆ Keyboards

Software:

- ◆ Getac Device Monitoring System
- ◆ Getac KeyWedge Barcode Reader Utility†
- ◆ Getac deployXpress®
- ◆ Getac OEMConfig
- ◆ Bittium SafeMove®
- ◆ Absolute

Intel® Wi-Fi 6
(802.11ax)*



WAREHOUSE / INVENTORY MANAGEMENT

Improve operational efficiency for indoor/outdoor picking, packing, dispatching components, loading/unloading supplies, and inventory management.

Tablets:

- ◆ ZX70 (7")
- ◆ T800 (8.1")
- ◆ ZX10 (10.1")
- ◆ UX10 (10.1")

Accessories:

- ◆ Carrying Solutions
- ◆ Charging Solutions
- ◆ Docking Solutions
- ◆ Routers & Antennas
- ◆ Keyboards

Software:

- ◆ Getac Driving Safety Utility
- ◆ Getac Device Monitoring System
- ◆ Getac deployXpress®
- ◆ Getac OEMConfig
- ◆ Bittium SafeMove®
- ◆ Absolute





FIELD SERVICE / FACILITY MANAGEMENT / VEHICLE TRACKING

Maintenance / testing of equipment and infrastructure, site visits and surveys that require transition from vehicle to outside environments.

Tablets:

- ◆ ZX70 (7")
- ◆ T800 (8.1")
- ◆ ZX10 (10.1")
- ◆ UX10 (10.1")
- ◆ F110 (11.6")
- ◆ K120 (12.5")

Laptops:

- ◆ V110 (11.6")
- ◆ B360 (13.3")
- ◆ S410 (14")

Accessories:

- ◆ Carrying Solutions
- ◆ Charging Solutions
- ◆ Docking Solutions
- ◆ Routers & Antennas
- ◆ Keyboards

Software:

- ◆ Getac Driving Safety Utility
- ◆ Getac Device Monitoring System
- ◆ Getac KeyWedge Barcode Reader Utility†
- ◆ Getac Virtual GPS Utility
- ◆ Getac deployXpress®
- ◆ Getac OEMConfig
- ◆ Bittium SafeMove®
- ◆ Absolute

TRANSPORT / IN CAB

Management of transport activities and data transmission with headquarters for geolocation, navigation, driver records, vehicle diagnostic, and load management.

Tablets:

- ◆ ZX70 (7")
- ◆ T800 (8.1")
- ◆ ZX10 (10.1")

Accessories:

- ◆ Charging Solutions
- ◆ Docking Solutions
- ◆ Routers & Antennas
- ◆ Keyboards

Software:

- ◆ Getac Driving Safety Utility
- ◆ Getac Device Monitoring System
- ◆ Getac KeyWedge Barcode Reader Utility†
- ◆ Getac Virtual GPS Utility
- ◆ Getac deployXpress®
- ◆ Getac OEMConfig
- ◆ Bittium SafeMove®
- ◆ Absolute



† Only available for devices with rear-facing camera



CARRYING SOLUTIONS

1. Shoulder Strap (2-point)
2. Shoulder Harness (4-point/handsfree)
3. Hand Strap
4. Wrist Strap
5. Rotating hand strap with kickstand and stylus holder hard handle
6. Carry bag

KEYBOARDS

- ◆ Rugged Keyboard
- ◆ Detachable Keyboard

DOCKING SOLUTIONS

- ◆ Vehicle Dock
- ◆ Office Dock
- ◆ Keyboard Dock
- ◆ Trolley Dock
- ◆ Vehicle Pouch
- ◆ Mounting Brackets

CHARGING SOLUTIONS

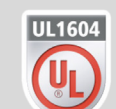
- ◆ Vehicle Adapter
- ◆ AC Adapter
- ◆ Isolated Forklift Adapter
- ◆ Multi-Bay Charger (dual, six, eight)
- ◆ Spare Batteries
- ◆ Extended Batteries

CERTIFICATIONS

Rigorous third-party testing helps Getac solutions meet high standards of ruggedness and reliability, providing you with technology that works where you do:

- ◆ Military Standard (MIL-STD) certified solutions: MIL-STD-810H, MIL-STD-461G
- ◆ IP Certified dust and moisture resistant laptops and tablets: IP53, IP65, IP66, IP67
- ◆ ATEX Certification*: ATEX / IECEx Zone 2/22
- ◆ ANSI Certification
- ◆ Salt Fog Certification

*Certifications vary according to models.



GETAC SOFTWARE



Getac Virtual GPS Utility

Getac VGPS (Virtual Global Positioning System) Utility replicates the physical GPS data to multiple COM ports to help ensure operational efficiency.



Getac KeyWedge Barcode Reader Utility

Cost-Effective alternative to scan all major sets of 1D and 2D barcode symbologies without a scanner, by adding barcode data to your application, using built-in cameras on Getac devices.



Getac deployXpress®

Android Configuration at Scale. A cloud-based deployment, configuration, and provisioning solution that brings scalability, precision, and over-the-air convenience to Getac Android ownership.



Getac Driving Safety Utility

By blanking the screen and disabling the keyboard when the vehicle is moving, you can keep your workforce safe by reducing driver distraction.



Getac Device Monitoring System

Monitor the health of your deployed devices in real-time to mitigate risk and keep all your Getac devices optimally operating 24/7/365.



Getac OEMConfig

EMM's Perfect Companion for Getac Device Management. Supporting a range of EMM platforms, unlocking the full potential of your Getac Android devices and packed with essential device controls.

THIRD-PARTY SOFTWARE

ABSOLUTE®

Monitor and manage devices to protect sensitive data, neutralise threats and keep your organisation secure.

Bittium

Bittium SafeMove® Mobile VPN
Remote access software provides always-on, secure and seamless mobility and addresses some of the most common issues with mobile connectivity.

Bittium SafeMove® Analytics
An intelligent tool for analysing device and connectivity performance.

FULLY RUGGED WARRANTY AS STANDARD INCLUDING ACCIDENTAL DAMAGE



3 Years Bumper-to-Bumper

V110 · B360 · B360 Pro · ZX70 · T800 · UX10 · F110 · K120 · A140 · ZX70-EX · T800-EX · UX10-EX · F110-EX · K120-EX · ZX10

3 Years Limited Warranty S410

EXTENDABLE WARRANTY TERM

Extend your standard warranty from 3 years Bumper-to-Bumper to 4 or 5 years.

EXTENDED DOCK WARRANTY

Extend your standard 3-year warranty on Getac-compatible Havis and Gamber-Johnson vehicle docks to 4 or 5 years.

With Getac carrying out authorised repairs, you get a simple & seamless support service.



www.getac.com

Copyright © 2022 Getac Technology Corporation and/or any of its affiliates. All Rights Reserved. Information provided herewith is for reference only, available specification shall be subjected to quotation by request.