

GETAC B360 PRO FULLY RUGGED LAPTOP ACCESSORY SPEC BROCHURE



GETAC TECHNOLOGY CORPORATION

Via Paracelso 26, Centro Direzionale Colleoni, Palazzo Cassiopea 3 20864 Agrate
Brianza (MB) Tel: +39 039 8901584 Sales-getac-Italy@getac.com |
www.getac.com/it/

**MAXIMUM PERFORMANCE MORE SECURE
AS RUGGED AS IT GETS**

CARRY BAG

FEATURES & BENEFITS

Constructed of durable Nylon/air mesh fabric and featuring an adjustable padded shoulder strap, this compact carry bag provides sturdy protection for your device while giving maximum comfort. The functional pockets inside offer the optimal solution to transport the laptop and needed accessories together in one case, delivering extra convenience and go-anywhere productivity to mobile professionals.

Product Information

Dimensions : L 405 x W 330 x D 100mm

Weight : 1.335kg

Main Material : Nylon, air mesh fabric

SKU ID

GMBCX7



B360 PRO SPARE MAIN BATTERY

FEATURES & BENEFITS

Getac B360 Pro Spare Main Battery is designed to provide the main power source for your device when the AC adapter is not connected. Designed with an integrated LED power indicator and status check button, allow the user to identify the battery capacity status at the push of a button.

Product Information

Battery type : Lithium-ion

Cell designation : 3S2P

Output Voltage : 10.8V

Capacity : typical 6900mAh; min. 6600mAh

Dimensions : L 141.05 x W 73.8 x H 22.3mm

Weight : 345.6g

SKU ID

GBM6X5



B360 EXTERNAL DUAL BAY BATTERY CHARGER

FEATURES & BENEFITS

Getac B360 External Dual-Bay Charger is designed to charge up to 2 B360 batteries at the same time. It provides you the benefit of charging and storing the 2 batteries together when there are limited space and power sockets. The two bays have two channels, each with their own LED power indicators. The integrated five-light LED power indicators display the charge of each battery.

Product Information

AC Input : 100V~240V

DC Output : 17.4V, 4A Max.

Number of charge bays : 2 bays

Dimensions : L 160 x W 180 x H 72.5mm

Weight : 1.2kg

Compatible with both B360 (GBM3X6) and B360Pro (GBM6X5) system battery.

SKU ID

GCMCEH (EU Power Cord)

GCMCUH (US Power Cord)

GCMCKH (UK Power Cord)

GCMCAH (AU Power Cord)

GCMCCH (CHN Power Cord)

GCMCTH (TW Power Cord)



B360 MULTI BAY BATTERY CHARGER

FEATURES & BENEFITS

This 8-bay battery charger is designed with 8 charging bays for charging multiple battery packs simultaneously, providing an efficient charging solution for different situations. It provides users with an efficient charging solution. The integrated five-light LED power indicators display the charge of each battery.

Product Information

AC Input : 100V~240V AC, 4.2A 50~60Hz

DC Output : 19.5V, 16.9A

* w / 330W AC Adapter

Number of charge bays: 8 bays

Dimensions : L 465 x W 245 x H 101~117.4 mm

Weight : 4.7 kg, not including battery packs

Compatible with both B360 (GBM3X6) and B360Pro (GBM6X5) system battery.

SKU ID

GCECEL (EU Power Cord)

GCECUL (US Power Cord)

GCECKL (UK Power Cord)

GCECAL (AU Power Cord)

GCECCL (CHN Power Cord)

GCECTL (TW Power Cord)



90W AC ADAPTER

FEATURES & BENEFITS

This adapter is designed to power the device and charge its internal battery from an AC power source. A country-specific power cord is included with the adapter to fit the local power outlet in your destination country.

Product Information

Input : 100V-240V
Output : 19V, 4.74 A, 90W
Dimensions : L 129 x W 53 x H 30.5mm
Weight : 368g
Input cable length : 1830mm
Output cable length : 1800mm

SKU ID

GAA9E5 (EU Power Cord)
GAA9U5 (US Power Cord)
GAA9K5 (UK Power Cord)
GAA9A5 (AU Power Cord)
GAA9C5 (CHN Power Cord)
GAA9T5 (TW Power Cord)



(for use in non-hazardous areas only)

90W MIL-STD-461 AC ADAPTER

FEATURES & BENEFITS

This MIL-STD-461G AC adapter has passed the military standard and testing specification to ensure the conducted emissions (CE), conducted susceptibility (CS), radiated emissions (RE), and radiated susceptibility (RS) of the adapter can meet the requirements for the control of electromagnetic interference.

Product Information

Input : 115V-230V, 1.6A 50~60Hz
Output : 19V, 4.74A, 90W
Dimensions : L 170 x W 75 x H 45mm
Weight : 880g (without power cord)
Input cable length : 1530mm
Output cable length : 1800mm

SKU ID

GAAGE5 (EU Power Cord)
GAAGU5 (US Power Cord)
GAAGK5 (UK Power Cord)
GAAGC5 (CHN Power Cord)



100W TYPE-C AC ADAPTER

FEATURES & BENEFITS

The 100W Type-C AC adapter as an additional charging solution to charge Getac rugged tablets and laptops with inherent USB type-C ports as well as the power delivery functionality. The Type-C adapter features a reversible connector type that reduces connector damages due to misuse.

Product Information

Input : 100V-240V
Output : 20V, 5A, 100W
Dimensions : L 140 x W 65 x H 25mm
Weight : 326g Input cable
length : 1830mm
Output cable length : 1500mm

SKU ID

GAT1E1 (EU Power Cord)
GAT1U1 (US Power Cord)
GAT1K1 (UK Power Cord)
GAT1A1 (AU Power Cord)
GAT1C1 (CHN Power Cord)
GAT1T1 (TW Power Cord)



120W AC ADAPTER WITH POWER CORD

FEATURES & BENEFITS

Specifically designed for use with the office docking station and performance SKU, this 120W AC adapter provides efficient delivery to power your devices.

Product Information

Input : 100V-240V

Output : 19V, 6.32A Max.

Dimensions : L 131.5 x W 69 x H 25.6mm

Weight : 412g

Input cable length : 1830mm

Output cable length : 1800mm

SKU ID

GAA3E2 (EU Power Cord)

GAA3U2 (US Power Cord)

GAA3K2 (UK Power Cord)

GAA3A2 (AU Power Cord)

GAA3C2 (CHN Power Cord)

GAA3T2 (TW Power Cord)

GAA3R2 (KR Power Cord)

GAA3I2 (IN Power Cord)

GAA3G2 (AG Power Cord)



120W DC-DC VEHICLE ADAPTER

FEATURES & BENEFITS

The 120W vehicle adapter comes with a choice of two types of connections: a bare wire with individual wire ends already stripped, and a cigarette lighter plug for easy connection to the cigarette lighter socket in the vehicle interior, providing a convenient way to charge and power your tablet while you are on the road.

Product Information

Input Voltage : 11VDC~ 32VDC

Output Voltage : 19VDC

Output current : 6.32A Max.

Case Dimensions : L 131.5 x W 65.6 x H 30mm

Weight : 362g

Input cable length : 1900mm

Output cable length : 1000mm

SKU ID

GAD2X4 (Cigarette Lighter Plug Version)

GAD2X8 (Bare Wire Version)



Cigarette Lighter Plug Version



Bare Wire Version

CAPACITIVE HARD TIP STYLUS & TETHER

FEATURES & BENEFITS

This capacitive stylus is lightweight and easy to control, allowing smooth and comfortable interaction with the touch screen without worrying about scratching the screen or leaving fingerprints on it. The stylus comes with a tether to keep it attached to the tablet, so it doesn't get lost or misplaced.

Product Information

Stylus Dimensions : 108.7 mm ; Ø9 mm

Tip size : 2.7 mm ; Ø2.8 mm

Color : Black

Tether Length : 304 mm

SKU ID

GMPSXK



B360 PROTECTION FILM AG

FEATURES & BENEFITS

This screen protection film is cut precisely to fit the B360 Fully Rugged Notebook and is easy to install and remove without leaving a sticky residue. With anti-glare coating, it not only protects the screen from the rigors of daily use but also help diffuses light on the screen and reduces glare, providing effortless readability for displayed information under common ambient lighting conditions.

Product Information

Dimensions : L 303.0 x W 174.6 x 0.24mm
Main Material : PET

SKU ID

GMPFXP



B360 OFFICE DOCK WITH AC ADAPTER

FEATURES & BENEFITS

The Getac office dock brings out multiple I/O ports for connecting essential peripheral devices in the office environment. Through the integrated ethernet, RS232, or USB connections, users can quickly collect and synchronize field data with central offices for real-time reporting and analytics.

Product Information

Dimensions : L 380.1 x W 291.2 x H 77.2 mm

Weight : 1.615kg * w / 120W AC Adapter

I/O Ports : DC in Jack x 1, Audio Output x 1, Microphone x 1, USB 2.0 x 2, USB 3.0 x 3, LAN x 2, HDMI x 1, VGA x 1, Serial Port x 1, Kensington Lock x 1

SKU ID

GDODE1 (EU Power Cord)

GDODU1 (US Power Cord)

GDODK1 (UK Power Cord)

GDODA1 (AU Power Cord)

GDODC1 (CHN Power Cord)

GDODT1 (TW Power Cord)



B360 MAIN STORAGE WITH CANISTER

FEATURES & BENEFITS

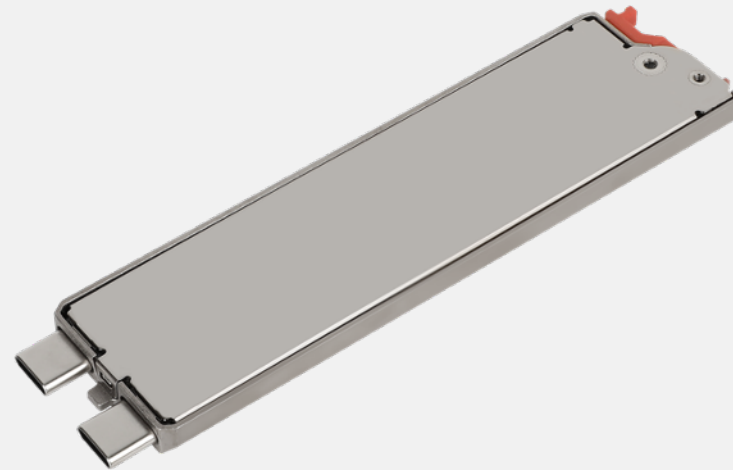
Getac B360 Main Storage with canister is designed to provide you the ease of installation and allow you to remove your confidential data when your device is sent for service.

Product Information

SSD Storage option : 256GB, 512GB, 1TB
Type : PCIe NVMe SSD
Dimensions : L 110.5 x W 27 x H 5mm

SKU ID

GSSEX3 (256GB PCIe SSD)
GSSFX3 (512GB PCIe SSD)
GSSGX3 (1TB PCIe SSD)



B360 SPARE SECOND STORAGE WITH CANISTER

FEATURES & BENEFITS

Getac B360 Spare Second Storage with canister is designed to provide you the ease of installation and allow you to remove your confidential data when your device is sent for service.

Product Information

SSD Storage option : 256GB, 512GB, 1TB
Type : SATA SSD
Dimensions : L 110.5 x W 26 x H 6mm

SKU ID

GSS2XD (256GB SATA SSD)
GSS4XF (512GB SATA SSD)
GSS0X9 (1TB SATA SSD)

