

GETAC X600 PRO FULLY RUGGED NOTEBOOK ACCESSORY SPEC BROCHURE



GETAC TECHNOLOGY CORPORATION

Via Paracelso 26, Centro Direzionale Colleoni,
Palazzo Cassiopea 3 20864 Agrate Brianza (MB)

Tel: +39 039 8901584

Sales-getac-Italy@getac.com | www.getac.com/it/

**YOUR POWERFUL & EXPANDABLE
RUGGED MOBILE WORKSTATION**

CARRY BAG

FEATURES & BENEFITS

Constructed of durable Nylon, and featuring an adjustable padded shoulder strap, this compact carry bag provides sturdy protection for your fully rugged notebook while giving maximum comfort. The functional pockets inside offer the optimal solution to transport the notebook and needed accessories together in one case, delivering extra convenience to mobile professionals.

Product Information

Dimensions : 450 x 330 x 230 (mm)
Main Material : Nylon 1000D

SKU ID

GMBPX1



SPARE MAIN BATTERY

FEATURES & BENEFITS

Getac Spare Main Battery is designed to provide the main power source for your device when the AC adapter is not connected / charged.

Product Information

Battery type : Lithium-ion

Cell designation : 3S2P

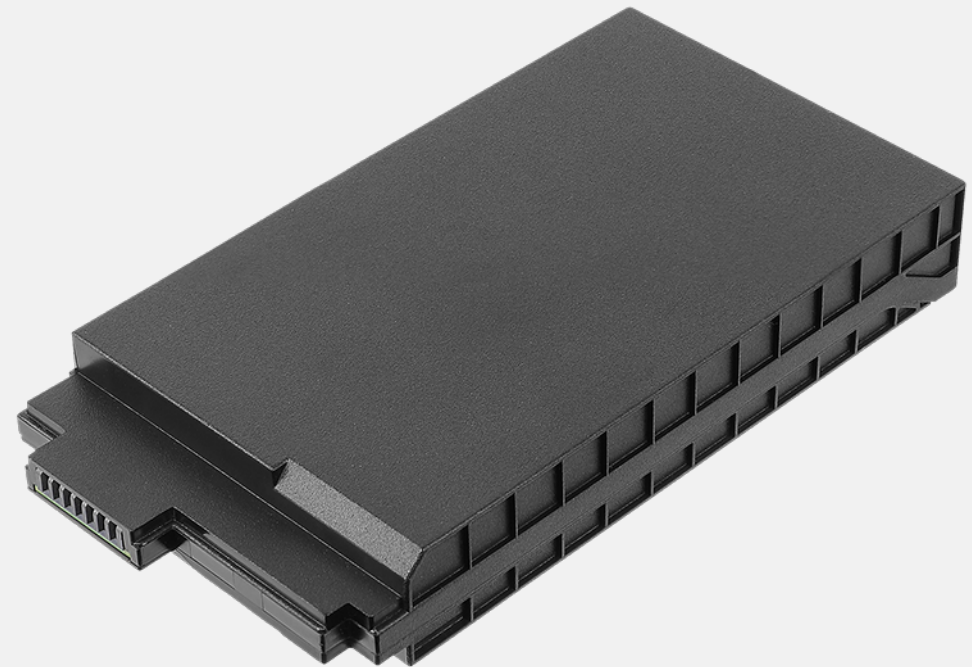
Output Voltage : 10.8V

Capacity : 6900mAh

Battery Dimensions and Weight : L 142.1 x W 72 x H 20.1mm, 350g

SKU ID

GBM6X8



MULTIMEDIA BAY BATTERY

FEATURES & BENEFITS

The Removable Media Bay Battery Pack is designed to fit perfectly in the media bay and provide additional battery life for workers who are in the field for long periods of time. With removable features, users can easily change the media bay battery by pulling it out from the media bay.

Product Information

Battery type : Lithium-ion

Cell designation : 3S2P

Output Voltage : 11.1V

Capacity : 4200mAh

Battery Dimensions and Weight : L 143.7 x W 135 x H 11.85mm,
305g

SKU ID

GBS6X2



EXTERNAL DUAL BAY BATTERY CHARGER

FEATURES & BENEFITS

This external dual-bay battery charger is designed to charge up to 2 batteries at the same time. It provides you the benefit of charging and storing the two batteries together when there are limited space and power socket.

Product Information

AC Input : 100V~240V

DC Output : 13.05V, 2.4A Max.

Number of charge bay : 2 Bay

Dimensions : L 160 x W 180 x H 72.5mm

Weight : 1.2kg

SKU ID

GCMC*K (Main Battery + Multimedia Bay Battery)

GCMC*J (Two Main Batteries)

* EU = E, US = U, UK = K, AU = A, PR = C, TW = T - Power cords



Main Battery + Multimedia Bay Battery



Two Main Batteries

230W AC ADAPTER

FEATURES & BENEFITS

This adapter is designed to power the notebook and charge its internal battery from an AC power source. A country-specific power cord is included with the adapter to fit the local power outlet in your designated country.

Product Information

Input Voltage : 100V-240V AC

Output Voltage : 19.5VDC

Output Current : Max 11.79A, 230W

Adapter Dimensions & Weight : L 177 x W 86 x H 32.2mm, 650g

Adapter Output Cord Length : 1500mm

Adapter Power Supply Cord Length : 1800mm

SKU ID

GAA8*1

* EU = E, US = U, UK = K, AU = A, CHN = C, TW = T, IN = I - Power cords



230W MIL-STD-461 AC ADAPTER

FEATURES & BENEFITS

The 230W MIL-STD-461 AC adapter has passed the military standard and testing specification to ensure the conducted emissions (CE), conducted susceptibility (CS), radiated emissions (RE), and radiated susceptibility (RS) of the adapter can meet the requirements for the control of electromagnetic interference.

Product Information

Input Voltage : 100V-240V AC

Output Voltage : 19.5VDC

Output Current : Max 11.8A (230W)

Adapter Dimensions and Weight :

L 256 x W 98 x H 57mm, 1.9kg

Adapter Output Cord Length : 1530mm

Adapter Power Supply Cord Length : 1800mm

230W MIL-STD-461 AC adapter is designed to charge single device at a time only.

SKU ID

GAAG*6

* EU = E, US = U, UK = K, AU = A, TW = T, IN = I, CHN = C - Power cords



230W DC-DC VEHICLE ADAPTER

FEATURES & BENEFITS

The 230W vehicle adapter comes with a choice of two types of connections: a bare wire with individual wire ends already stripped, and a cigarette lighter plug for easy connection to the cigarette lighter socket in the vehicle interior, providing a convenient way to charge and power your device while you are on the road.

Product Information

Input Voltage : 11VDC~ 16VDC for 12V system and 22VDC~36VDC for 24V system
Output Voltage : 19VDC
Output current : 12.1A Max.
Adapter Dimensions : L 280 x W 75 x H 49mm
Input cable length : 1900mm
Output cable length : 1530mm

SKU ID

GAD5X2 (Bare Wire Version)



CAPACITIVE STYLUS PEN & TETHER

FEATURES & BENEFITS

This capacitive hard tip stylus is lightweight and easy to control, allowing smooth and comfortable interaction with the touch screen without worrying about scratching the screen or leaving fingerprints on it. The stylus comes with a detachable tether to keep the stylus attached to the device, so it doesn't get lost or misplaced.

Product Information

Stylus Dimensions : 111mm ; Ø9mm
Tip size : 3.8mm ; Ø3.5mm
Tether Length : 304mm

SKU ID

GMPSXE



LCD SCREEN PROTECTION FILM

FEATURES & BENEFITS

This screen protection film is cut precisely to fit the device and is easy to install and remove without leaving a sticky residue. With anti-glare coating, it not only protects the screen from the rigors of daily use but also help diffuses light on the screen and reduces glare, providing effortless readability for displayed information under common ambient lighting conditions.

Product Information

Dimensions : L 345.7 x W 195.3mm
Main Material : PET

SKU ID

GMPFXU



SPARE MAIN STORAGE

FEATURES & BENEFITS

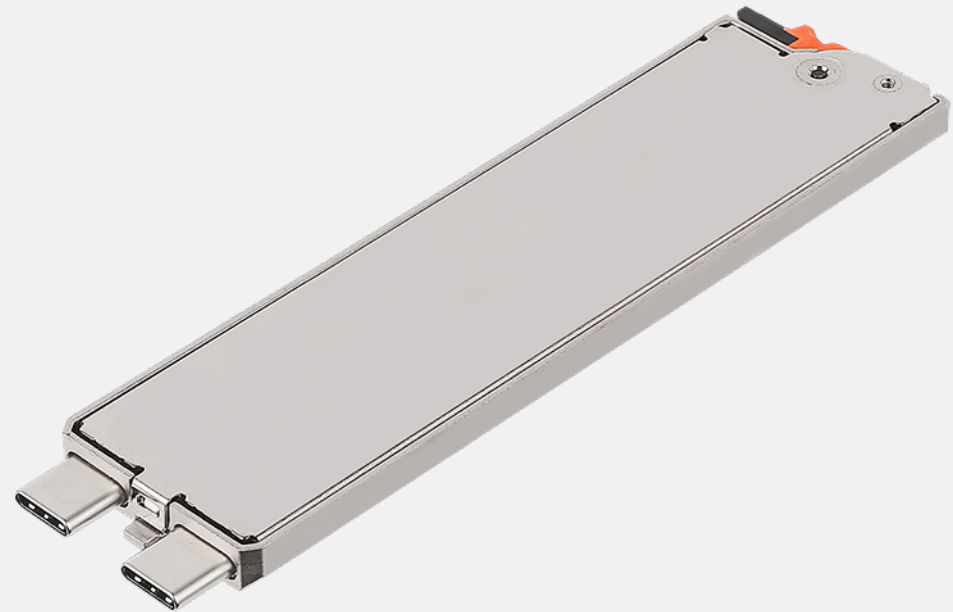
Getac Spare Main Storage with canister is designed to provide you the ease of installation and allow you to remove your confidential data when your device is sent for service.

Product Information

Capacity : PCIe 512GB/1TB
Dimension : L 110.8 x W 30.2 x H 5.7mm
Weight : 37.8g

SKU ID

GSSF7 : 512GB PCIe SSD
GSSGX7 : 1TB PCIe SSD



DVD SUPER MULTI DRIVE

FEATURES & BENEFITS

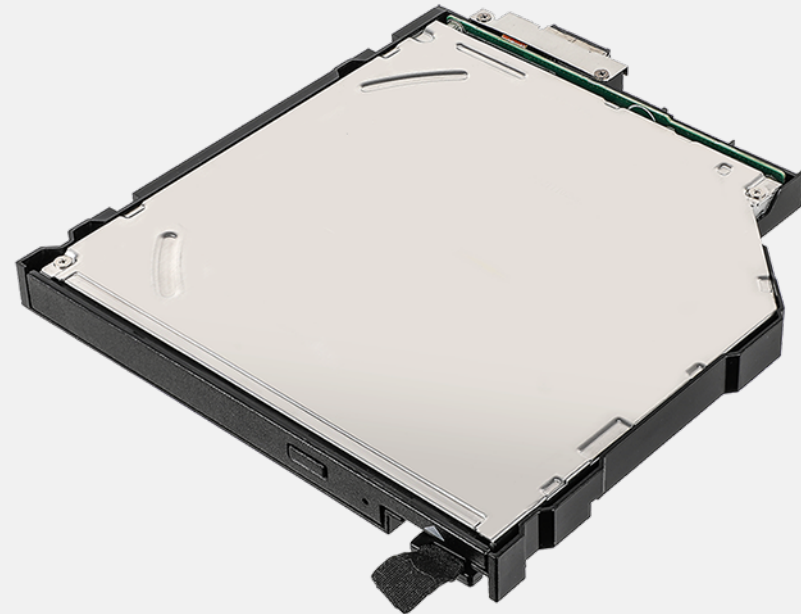
The DVD Super Multi Drive is an optical disk drive that can read and write for different kinds of optical disks. It allows the user to access a variety of different media formats. Besides, It is a user-removable module that can be installed without tools.

Product Information

Dimension : L 147.4 x W 135 x H 14.4mm
Weight : 157.4g

SKU ID

GSROXA



BLU-RAY SUPER MULTI DRIVE

FEATURES & BENEFITS

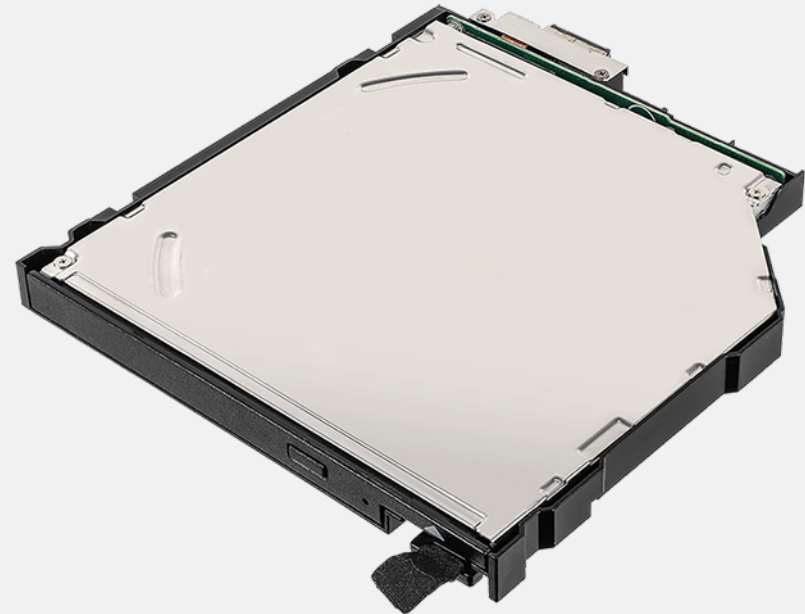
The Blu-Ray super multi drive is an optical disk drive that can read and write for different kinds of optical disks. It allows the user to access a variety of different media formats. Besides, It is a user-removable module that can be installed without tools.

Product Information

Dimension: L 147.4 x W 135 x H 14.4mm
Weight: 157.4g

SKU ID

GSROXB



OFFICE DOCK WITH AC ADAPTER

FEATURES & BENEFITS

The Getac office dock brings out multiple I/O ports for connecting essential peripheral devices in the office environment. Through the integrated ethernet, HDMI, or USB connections, users can quickly collect and synchronize field data with central offices for real-time reporting and analytics.

Product Information

Dimensions : L 459.6 x W 176.4 x H 71.3mm

* w/o 230W AC Adapter

I/O Ports :

DC in Jack x 1

Audio output x 1

Microphone x1

USB 2.0 x 2

USB 3.0 x 3

LAN x 2

HDMI x 1

VGA x 1

Display port x 1

Serial Port x 1

Kensington lock x 1



SKU ID

GDOD*9

* EU = E, US = U, UK = K, AU = A, CHN = C, IN = I - Power cords