

GETAC X500 ACCESSORY SPEC BROCHURE

X500

Ultra Rugged
Notebook



Large Screen Endless Expansion

X500 AC ADAPTER

Features & Benefits

This adapter is designed to power the X500 and charge its internal battery from an AC power source. A country-specific power cord is included with the adapter to fit the local power outlet in your designated country.

Product Information

Input Voltage : 100V-240V AC

Output Voltage : 19VDC

Output Current : Max 7.89A, 150W

Adapter Dimensions & Weight :

L 151.3 x W 75.6 x H 25.4mm, 485g

Adapter Output Cord Length : 1800mm

Adapter Power Supply Cord Length :
1830mm

SKU ID

SKU ID : GAA1*3

* EU = E, US = U, UK = K, AU = A,
PR = C, TW = T, KR = R, IN = I ,
AG = G - Power cords

Product Photo



X500 MIL-STD-461 AC ADAPTER

Features & Benefits

Getac X500 MIL-STD-461 AC adapter has passed the military standard and testing specification to ensure the conducted emissions (CE), conducted susceptibility (CS), radiated emissions (RE), and radiated susceptibility (RS) of the adapter can meet the requirements for the control of electromagnetic interference.

Product Information

Input Voltage : 100V-240V AC

Output Voltage : 19VDC

Output Current : Max 7.9A (150W)

Adapter Dimensions and Weight :

L 195 x W 98 x H 57mm, 1590g

Adapter Output Cord Length : 1530mm

Adapter Power Supply Cord Length : 1800mm

X500 MIL-STD-461 AC adapter is designed to charge single device at a time only.

SKU ID

SKU ID: GAAG*4

* EU = E, US = U, UK = K, AU = A, TW = T
- Power cords

Product Photo



X500 EXTERNAL DUAL BAY MAIN BATTERY CHARGER

Features & Benefits

Getac X500 External Dual-Bay Main Battery Charger is designed to charge up to 2 main batteries at the same time, it provides you the benefit of charging and storage of 2 main batteries together when there is limited space and power sockets.

Product Information

AC Input : 100V~240V
DC Output : 13.05V, 2.4A Max.
Number of charge bays : 2 bays

Dimensions :
L 160 x W 180 x H 72.5mm
Weight : 1.2kg

SKU ID

SKU ID : GCMC*3

* EU = E, US = U, UK = K, AU = A,
PR = C, TW = T - Power cords

Product Photo



X500 EXTERNAL DUAL BAY SECOND BATTERY (MEDIA BAY) CHARGER

Features & Benefits

This external dual-bay main battery charger is designed to charge up to 2 batteries at the same time. It provides you the benefit of charging and storing the 2 main batteries together when there are limited space and power socket.

Product Information

AC Input : 100V~240V

DC Output : 13.05V, 2.4A Max.

Number of charge bays : 2 bays

Dimensions :

L 160 x W 180 x H 72.5mm

Weight : 1.2kg

SKU ID

SKU ID : GCMC*D

* EU = E, US = U, UK = K, AU = A,
PR = C, TW = T - Power cords

Product Photo



X500 SPARE MAIN BATTERY

Features & Benefits

Getac X500 Spare Main Battery is designed to provide the main power source for your device when the AC adapter is not connected / charged.

It is designed with an LED power indicator and status check button, allowing users to identify the battery status at a push of a button.

Product Information

Battery type : Lithium-ion

Cell designation : 3S3P

Output Voltage : 10.8V

Capacity : 9240mAh

Battery Dimensions and Weight :
L 140 x W 89 x H 20mm, 480g

SKU ID

SKU ID : GBM9X7

Product Photo



X500 SPARE STORAGE with canister

Features & Benefits

The Getac X500 Spare Storage with canister is designed to provide you the ease of installation and allow you to keep your confidential data when your device for repair.

Product Information

HDD Storage option :
500GB, 1TB.

SSD Storage option :
512GB, 1TB.

Dimensions :
L 120 x W 80 x H 18mm

SKU ID

| <i>SKU ID</i> | <i>Storage</i> |
|---------------|----------------|
| GSH5XA | 500GB HDD |
| GSH1X7 | 1TB HDD |
| GSS4XC | 512GB SSD |
| GSS0X5 | 1TB SSD |

Product Photo



X500 REMOVABLE MEDIA BAY BATTERY PACK

Features & Benefits

The Getac X500 Removable Media Bay Battery Pack is designed to fit right in the media bay and provide additional battery life for your device when the AC adapter is not connected/charged.

With removable features, the user can easily change the media bay battery by pulling it out from the media bay.

Product Information

Battery type : Lithium-ion

Cell designation : 3S3P

Output Voltage : 10.8V

Capacity : 9240mAh

Dimensions : L 150 x W 132 x H 22mm

SKU ID

SKU ID : GBS9X4

Product Photo



X500 REMOVABLE MEDIA BAY STORAGE

Features & Benefits

The Getac X500 Removable Media Bay Storage is designed to provide you additional storage space from the main storage. The removable storage provides you the ease of installation and allows you to keep your confidential data when your device is sent for repair.

Product Information

HDD Storage option :
500GB, 1TB.

SSD Storage option :
512GB, 1TB.

Dimensions :
L 150 x W 132 x H 22mm

SKU ID

| SKU ID | Storage |
|--------|-----------|
| GSR5X5 | 500GB HDD |
| GSR6X2 | 1TB HDD |
| GSR3X4 | 512GB SSD |
| GSR0X3 | 1TB SSD |

Product Photo



X500 OFFICE DOCK with AC Adapter

Features & Benefits

The Getac office dock brings out multiple I/O ports for connecting essential peripheral devices in the office environment. Through the integrated ethernet, RS232, or USB connections, users can quickly collect and synchronize field data with central offices for real-time reporting and analytics.

Product Information

Dimensions :

L 438.4 x W 154 x H 62mm

* w / 150W AC Adapter

I/O Ports :

DC in Jack x 1

Audio Output x 1

Microphone x1

USB 3.2 x 2

USB 2.0 x 2

LAN x 1

HDMI x 1

VGA x 1

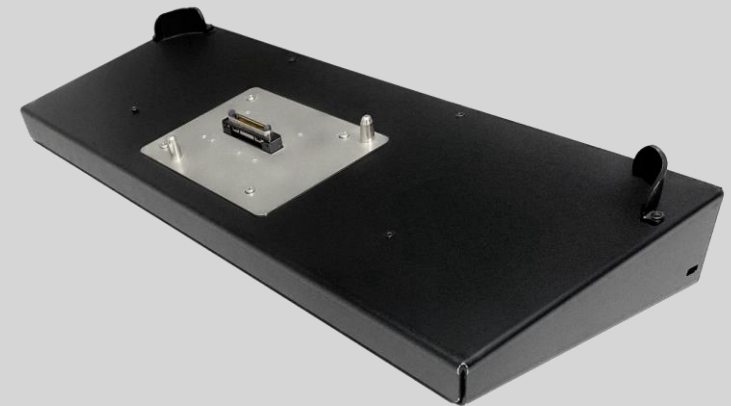
Serial Port x 1

SKU ID

SKU ID : GDOF*Q

* EU = E, US = U, UK = K, AU = A,
PR = C, TW = T, KR = R, IN = I
- Power cords

Product Photo



X500 VEHICLE DOCK

Features & Benefits

The vehicle dock duplicates most of your computer's ports and provides extra ports. With peripherals such as a keyboard, mouse, monitor, and printer all connected to the vehicle dock, you create a mobile office. The adjustable latch also provides multiple viewing angles. This product consists of a base dock and an vehicle adapter. The two should be assembled before usage.

Product Information

Dimensions :

L x W x D mm 410 x 332 x 125 mm
(16.4" x 13.1" x 4.9")

Weight : 6.04 kg (13.32lbs)

Docking Connector

I/O Interfaces :

DC in Jack x 1

Audio Output x 1

Microphone x1

USB 2.0 x 4

RJ-45 x 1

VGA x 1

Serial Port x 2

RF Antenna Pass-Through x 3*

**w / 120W DC Adapter

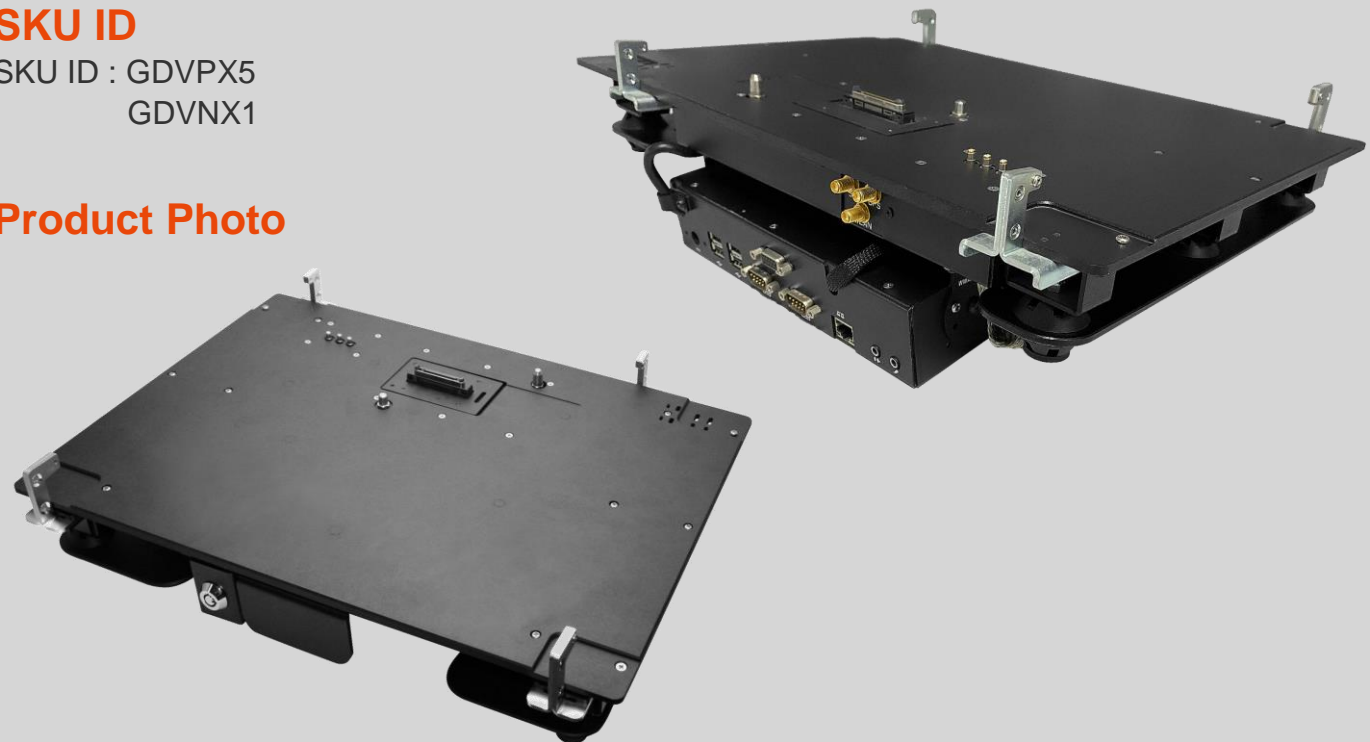
* For GDVPX5 SKU

SKU ID

SKU ID : GDVPX5

GDVNX1

Product Photo



X500 CARRY BAG

Features & Benefits

Constructed of durable Nylon, and featuring an adjustable padded shoulder strap, this compact carry bag provides sturdy protection for your X500 fully rugged notebook while giving maximum comfort.

The functional pockets inside offer the optimal solution to transport the notebook and needed accessories together in one case, delivering extra convenience to mobile professionals.

Product Information

Dimensions : 450 x 330 x 230 (mm)

Main Material : Nylon 1000D

SKU ID

SKU ID : GMBPX1

Product Photo

