

X600 ACCESSORY SPEC BROCHURE



GETAC TECHNOLOGY CORPORATION

5F, Building A, No. 209, Section 1, Nangang Rd., Nangang Dist., Taipei City,
115018, Taiwan, R.O.C. Tel : +886 2 2785 7888 globalmarketing@getac.com |
www.getac.com

BACKPACK

Features & Benefits

Constructed of durable Nylon, and featuring an adjustable padded shoulder strap, this backpack provides sturdy protection for your fully rugged notebook while giving maximum comfort. The functional pockets inside offer the optimal solution to transport the notebook and needed accessories together in one case, delivering extra convenience to mobile professionals.

Product Information

Dimensions : 450 x 330 x 230mm
Main Material : Nylon 1000D

SKU ID

GMBPX1



SPARE MAIN BATTERY

Features & Benefit

Getac Spare Main Battery is designed to provide the main power source for your device when the AC adapter is not connected / charged.

Product Information

Battery type : Lithium-ion
Cell designation : 3S2P
Output Voltage : 10.8V
Capacity : 6900mAh
Battery Dimensions and Weight : L 142.1 x W 72 x H 20.1mm, 350g

SKU ID

GBM6X8



EXTERNAL DUAL BAY BATTERY CHARGER

Features & Benefits

This external dual-bay battery charger is designed to charge up to 2 batteries at the same time. It provides you the benefit of charging and storing the two batteries together when there are limited space and power socket.

Product Information

AC Input : 100V~240V
DC Output : 13.05V, 2.4A Max.
Number of charge bay : 2 Bay
Dimensions : L 160 x W 180 x H 72.5mm
Weight : 1.2kg

SKU ID

GCMCEJ (EU Power Cord)
GCMCUJ (US Power Cord)
GCMCKJ (UK Power Cord)
GCMCAJ (AU Power Cord)
GCMCCJ (CHN Power Cord)
GCMCTJ (TW Power Cord)
GCMCIJ (IN Power Cord)



230W MIL-STD-461 AC ADAPTER

Features & Benefits

The 230W MIL-STD-461 AC adapter has passed the military standard and testing specification to ensure the conducted emissions (CE), conducted susceptibility (CS), radiated emissions (RE), and radiated susceptibility (RS) of the adapter can meet the requirements for the control of electromagnetic interference.

Product Information

Input Voltage : 100V-240V AC

Output Voltage : 19.5VDC

Output Current : Max 11.8A (230W)

Adapter Dimensions and Weight : L 256 x W 98 x H 57mm, 1.9kg

Adapter Output Cord Length : 1530mm

Adapter Power Supply Cord Length : 1800mm

230W MIL-STD-461 AC adapter is designed to charge single device at a time only.

SKU ID

GAAGE6 (EU Power Cord)

GAAGU6 (US Power Cord)

GAAGK6 (UK Power Cord)

GAAGA6 (AU Power Cord)

GAAGC6 (CHN Power Cord)

GAAGT6 (TW Power Cord)

GAAGI6 (IN Power Cord)



230W DC-DC VEHICLE ADAPTER

Features & Benefits

The 230W vehicle adapter is configured with bare wires, providing ease of hardwired installation to your vehicle, so you can power your device on the go.

Product Information

Input Voltage : 11VDC~ 16VDC for 12V system and 22VDC~36VDC for 24V system

Output Voltage : 19VDC

Output current : 12.1A Max.

Adapter Dimensions : L 280 x W 75 x H 49mm

Weight : 1.7kg ±170g

Input cable length : 1900mm

Output cable length : 1530mm

SKU ID

GAD5X2 (Bare Wire Version)



230W AC ADAPTER

Features & Benefits

This adapter is designed to power the notebook and charge its internal battery from an AC power source. A country-specific power cord is included with the adapter to fit the local power outlet in your designated country.

Product Information

Input Voltage : 100V-240V AC

Output Voltage : 19.5VDC

Output Current : Max 11.79A, 230W

Adapter Dimensions Weight : L 177 x W 86 x H 32.2mm, 650g

Adapter Output Cord Length : 1500mm

Adapter Power Supply Cord Length : 1800mm

SKU ID

GAA8E1 (EU Power Cord)

GAA8U1 (US Power Cord)

GAA8K1 (UK Power Cord)

GAA8A1 (AU Power Cord)

GAA8C1 (CHN Power Cord)

GAA8T1 (TW Power Cord)

GAA8I1 (IN Power Cord)



OFFICE DOCK WITH AC ADAPTER

Features & Benefits

The Getac office dock brings out multiple I/O ports for connecting essential peripheral devices in the office environment. Through the integrated ethernet, HDMI, or USB connections, users can quickly collect and synchronize field data with central offices for real-time reporting and analytics.

Product Information

Dimensions : L 459.6 x W 176.4 x H 71.3mm

* w/o 230W AC Adapter

I/O Ports : DC in Jack x 1, Audio output x 1, Microphone x1, USB 2.0 x 2, USB 3.0 x 3, LAN x 2, HDMI x 1, VGA x 1, Display port x 1, Serial Port x 1, Kensington lock x 1

SKU ID

GDODE9 (EU Power Cord)
GDODU9 (US Power Cord)
GDODK9 (UK Power Cord)
GDODA9 (AU Power Cord)
GDODC9 (CHN Power Cord)
GDODI9 (IN Power Cord)



CAPACITIVE STYLUS PEN & TETHER

Features & Benefits

This capacitive hard tip stylus is lightweight and easy to control, allowing smooth and comfortable interaction with the touch screen without worrying about scratching the screen or leaving fingerprints on it. The stylus comes with a detachable tether to keep the stylus attached to the device, so it doesn't get lost or misplaced.

Product Information

Stylus Dimensions : 111mm ; Ø9mm
Tip size : 3.8mm ; Ø3.5mm
Tether Length : 304mm

SKU ID

GMPSXE



LCD SCREEN PROTECTION FILM

Features & Benefits

This screen protection film is cut precisely to fit the device and is easy to install and remove without leaving a sticky residue. With anti-glare coating, it not only protects the screen from the rigors of daily use but also help diffuses light on the screen and reduces glare, providing effortless readability for displayed information under common ambient lighting conditions.

Product Information

Dimensions : L 345.7 x W 195.3mm
Main Material : PET

SKU ID

GMPFXU



SPARE MAIN STORAGE

Features & Benefits

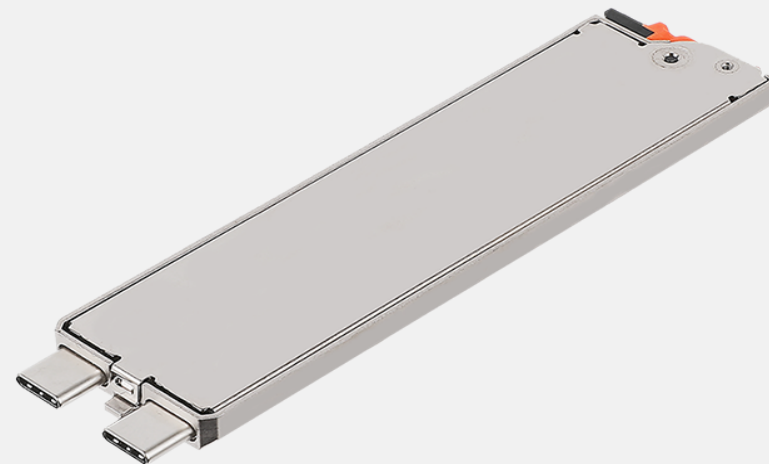
Getac Spare Main Storage with canister is designed to provide you the ease of installation and allow you to remove your confidential data when your device is sent for service.

Product Information

Capacity : PCIe 512GB/1TB
Dimension : L 110.8 x W 30.2 x H 5.7mm
Weight : 37.8g

SKU ID

GSSF7 (512GB PCIe SSD)
GSSGX7 (1TB PCIe SSD)



150W AC ADAPTER

Features & Benefits

This adapter is designed to power the notebook and charge its internal battery from an AC power source. A country-specific power cord is included with the adapter to fit the local power outlet in your designated country.

Product Information

Input Voltage : 100V-240V AC
Output Voltage : 19VDC
Output Current : Max 7.89A, 150W
Adapter Dimensions & Weight : L 151.3 x W 75.6 x H 25.4mm, 485g
Adapter Output Cord Length : 1800mm
Adapter Power Supply Cord Length : 1830mm

SKU ID

GAA1E3 (EU Power Cord)
GAA1U3 (US Power Cord)
GAA1K3 (UK Power Cord)
GAA1A3 (AU Power Cord)
GAA1C3 (CHN Power Cord)
GAA1T3 (TW Power Cord)
GAA1I3 (IN Power Cord)

