

## S410 ACCESSORY SPEC BROCHURE



Getac (UK) Ltd.

Getac House, Stafford Park 12, Telford, Shropshire TF3 3BJ, United Kingdom

Tel : +44 (0) 1952 207 222 Sales-Getac-UK@getac.com | [www.getac.com/en/](http://www.getac.com/en/)

# CARRY BAG

## Features & Benefits

Constructed of durable Nylon/air mesh fabric and featuring an adjustable padded shoulder strap, this compact carry bag provides sturdy protection for your device while giving maximum comfort. The functional pockets inside offer the optimal solution to transport the laptop and needed accessories together in one case, delivering extra convenience and go-anywhere productivity to mobile professionals.

### Product Information

Dimensions : L 405 x W 330 x D 100mm  
Weight : 1.335kg  
Main Material : Nylon, air mesh fabric

### SKU ID

GMBCX7



# EXTERNAL DUAL BAY BATTERY CHARGER

## Features & Benefits

This external dual-bay battery charger is designed to charge up to 2 batteries at the same time. It provides you the benefit of charging and storing two batteries together when there is limited space and power sockets.

### Product Information

AC Input : 100V~240V  
DC Output : 13.05V, 2.4A Max.  
Number of charge bay : 2 Bay  
Dimensions : L 160 x W 180 x H 72.5mm  
Weight : 1.2kg

### SKU ID

Main Battery + Multimedia Bay Battery	Two Main Batteries
GCMCEK (EU Power Cord) GCMCUK (US Power Cord) GCMCKK (UK Power Cord) GCMCAK (AU Power Cord) GCMCCK (CHN Power Cord) GCMCTK (TW Power Cord) GCMCIK (IN Power Cord)	GCMCEJ (EU Power Cord) GCMCUJ (US Power Cord) GCMCKJ (UK Power Cord) GCMCAJ (AU Power Cord) GCMCCJ (CHN Power Cord) GCMCTJ (TW Power Cord) GCMCIJ (IN Power Cord)



# MAIN BATTERY & 2ND BATTERY

## Features & Benefits

The S410 Spare Main Battery is designed to provide main power source for device when AC adapter is not connected/charged.

### Product Information

Battery Type : Lithium-ion 6 cells, 74.5WH  
Nominal Voltage : 10.8V  
Capacity : 6900mAh  
Battery Pack Weight : 330g

### SKU ID

GBM6X6



# MULTI-BAY BATTERY CHARGER EIGHT BAY

## Features & Benefits

The 8-bay multi-battery charger is designed to charge multiple battery packs simultaneously and provide users an efficient charging solution.

### Product Information

AC Input : 100V~240V AC, 4.2A 50~60Hz  
DC Output : 19.5V, 16.9A \* w/ 330W AC Adapter  
Number of charge bays : 8 bays  
Dimensions : L 465 x W 245 x H 95.3~111.3mm  
Weight : 4.7kg, not including battery packs

### SKU ID

Main Batteries Only  
GCECEM (EU Power Cord)  
GCECUM (US Power Cord)  
GCECKM (UK Power Cord)  
GCECAM (AU Power Cord)  
GCECCM (CHN Power Cord)



# MULTIMEDIA BAY BATTERY

## Features & Benefits

The Getac S410 Removable Media Bay Battery Pack is designed to fit perfectly in the media bay and provide additional battery life for workers who are in the field for long periods of time. With removable features, users can easily change the media bay battery by pulling it out from the media bay.

### Product Information

Battery Type : Lithium-ion, 6 cells, 46.6WH  
Nominal Voltage : 11.1V  
Capacity : 4200mAh  
Battery Pack Weight : 300g

### SKU ID

GBS6X1



# 100W TYPE-C AC ADAPTER

## Features & Benefits

The 100W Type-C AC adapter as an additional charging solution to charge Getac rugged tablets and laptops with inherent USB type-C ports as well as the power delivery functionality. The Type-C adapter features a reversible connector type that reduces connector damages due to misuse.

### Product Information

Input : 100V-240V  
Output : 20V, 5A, 100W  
Dimensions : L 140 x W 65 x H 25mm  
Weight : 326g  
Input cable length : 1830mm  
Output cable length : 1500mm

### SKU ID

GAT1E1 (EU Power Cord)  
GAT1U1 (US Power Cord)  
GAT1K1 (UK Power Cord)  
GAT1A1 (AU Power Cord)  
GAT1C1 (CHN Power Cord)  
GAT1T1 (TW Power Cord)  
GAT1I1 (IN Power Cord)



# 120W AC ADAPTER WITH POWER CORD

## Features & Benefits

Specifically designed for use with the office docking station and performance SKU, this 120W AC adapter provides efficient delivery to power your devices.

### Product Information

Input : 100V-240V  
Output : 19V, 6.32A Max.  
Dimensions : L 131.5 x W 69 x H 25.6mm  
Weight : 412g  
Input cable length : 1830mm  
Output cable length : 1800mm

### SKU ID

GAA3E2 (EU Power Cord)  
GAA3U2 (US Power Cord)  
GAA3K2 (UK Power Cord)  
GAA3A2 (AU Power Cord)  
GAA3C2 (CHN Power Cord)  
GAA3T2 (TW Power Cord)  
GAA3R2 (KR Power Cord)  
GAA3I2 (IN Power Cord)  
GAA3G2 (AG Power Cord)





# 90W AC ADAPTER

## Features & Benefits

This adapter is designed to power the device and charge its internal battery from an AC power source. A country-specific power cord is included with the adapter to fit the local power outlet in your destination country.

### Product Information

Input : 100V-240V

Output : 19V, 4.74 A, 90W

Dimensions : L 140.1 x W 65.1 x H 25.4 mm

Weight : 275 g

Input cable length : 1830mm

Output cable length: 1500mm

### SKU ID

GAA9U6 (US Power Cord)

GAA9E6 (EU Power Cord)

GAA9K6 (UK Power Cord)

GAA9C6 (CHN Power Cord)

GAA9A6 (AU Power Cord)

GAA9T6 (TW Power Cord)

GAA9I6 (IN Power Cord)

GAA9G6 (ARG Power Cord)

GAA9J6 (JPN Power Cord)

GAA9R6 (KR Power Cord)



# OFFICE DOCK WITH 120W AC ADAPTER

## Features & Benefits

For workers, who need to work from the office, the S410 office dock provides a variety of connections: VGA, USB, RS232 serial and LAN (RJ-45) which helps update data with central offices in real-time.

### Product Information

DC in Jack x 1  
Audio Output x 1  
USB 3.0 x 1  
USB 2.0 x 3  
VGA x 1  
HDMI x 1  
LAN (RJ-45) x 1  
RS232 serial x 1  
Microphone x 1  
\* w/ 120W AC Adapter

### SKU ID

GDODE4 (EU Power Cord)  
GDODU4 (US Power Cord)  
GDODK4 (UK Power Cord)  
GDODA4 (AU Power Cord)  
GDODC4 (CHN Power Cord)  
GDODT4 (TW Power Cord)  
GDODR4 (KR Power Cord)  
GDODI4 (IN Power Cord)



# CAPACITIVE STYLUS PEN & TETHER

## Features & Benefits

This capacitive hard tip stylus is lightweight and easy to control, allowing smooth and comfortable interaction with the touch screen without worrying about scratching the screen or leaving fingerprints on it. The stylus comes with a detachable tether to keep the stylus attached to the device, so it doesn't get lost or misplaced.

### Product Information

Stylus Dimensions : 111mm ; Ø9mm  
Tip size : 3.8mm ; Ø3.5mm  
Tether Length : 304mm

### SKU ID

GMPSXE



# GETAC DS100 USB-C DOCKING STATION WITH AC ADAPTER

## Features & Benefits

The Getac DS100 USB-C Docking Station, featuring a slim and compact design, seamlessly consolidates cables on the workstation. This allows users to swiftly create a personalized workspace and organize their daily office environment. Compatible with various Getac laptop and tablet models, it provides extra connectivity and multiple I/O ports for additional peripherals and data sources. With support for MAC Address Pass-Through, Wake-on-LAN (WoL), and PXE Boot, the DS100 aids IT administrators in maintaining a secure, efficient, and well-managed network infrastructure.

### Product Information

Dimensions: L 207 x W 90 x H 34.1mm

Weight (without 135W AC Adapter): 372.4g (0.82lbs)

Power Cable Length: 1.8m

USB-C Upstream Cable Length: 1m

I/O Ports: DC in Jack x 1, USB 3.2 Gen 1 Type-A x 3,

USB 3.2 Gen 2 Type-C x 2, LAN x 1, HDMI 2.0 x 1, DisplayPort 1.4 x 2

(For use in non-hazardous areas only)

### SKU ID

GDDSE2 (EU Power Cord)

GDDSU2 (US Power Cord)

GDDSK2 (UK Power Cord)

GDDSA2 (AU Power Cord)

GDDSC2 (CHN Power Cord)

GDDST2 (TW Power Cord)

GDDSI2 (IN Power Cord)



# PROTECTION FILM

## Features & Benefits

This screen protection film is cut precisely to fit the S410 device and is easy to install and remove without leaving a sticky residue. With anti-glare coating, it not only protects the screen from the rigors of daily use and helps to diffuse light on the screen and reduces glare, providing effortless readability for displayed information under common ambient lighting conditions.

### Product Information

Dimensions : L 309.4 x W 173.85 x H 0.15mm  
Main Material : PET

### SKU ID

GMPFXN



# MULTIMEDIA BAY 2ND STORAGE WITH CANISTER

## Features & Benefits

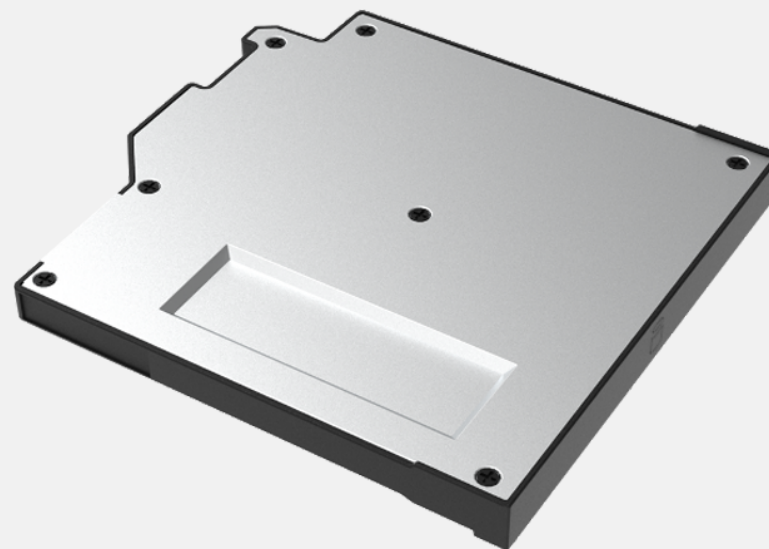
Getac S410 second storage with canister is designed to provide you the ease of installation and allow you to remove your confidential data when your device is sent for service.

### Product Information

Capacity : SATA 512GB/1TB  
Dimension : 140 x 134 x 9mm  
Weight : 86g

### SKU ID

GSR3X5 (512GB SATA SSD)  
GSR0X4 (1TB SATA SSD)



# SPARE MAIN STORAGE

## Features & Benefits

Getac S410 Spare Main Storage with canister is designed to provide you the ease of installation and allow you to remove your confidential data when your device is sent for service.

### Product Information

Capacity : PCIe NVMe 256GB/512GB/1TB/2TB  
Dimension : 107 x 26 x 8mm  
Weight : 90g

### SKU ID

GSSEX8 (256GB PCIe NVMe SSD)  
GSSFX9 (512GB PCIe NVMe SSD)  
GSSGXA (1TB PCIe NVMe SSD)  
GSSHX9 (2TB PCIe NVMe SSD)



# 120W DC-DC VEHICLE ADAPTER

## Features & Benefits

The 120W vehicle adapter comes with a choice of two types of connections: a bare wire with individual wire ends already stripped, and a cigarette lighter plug for easy connection to the cigarette lighter socket in the vehicle interior, providing a convenient way to charge and power your tablet while you are on the road.

### Product Information

Input Voltage : 11VDC~ 32VDC  
Output Voltage : 19VDC  
Output current : 6.32A Max.  
Case Dimensions : L 131.5 x W 65.6 x H 30mm  
Weight : 362g  
Input cable length : 1900mm  
Output cable length : 1000mm

### SKU ID

GAD2X4 (Cigarette Lighter Plug Version)  
GAD2X8 (Bare Wire Version)

