



GAMBER
JOHNSON

GETAC
SELECT

Getac

MATERIAL HANDLING

RUGGED. RELIABLE. RESPONSIVE.™

SECURE YOUR ASSETS WITH A NAME YOU CAN TRUST

Gamber-Johnson is the global leader in equipment mounting products — driven by our mission of “supporting technology to help save the world.” We manufacture components and systems for every mounting solution, all meticulously designed to be rugged, reliable, and responsive. Gamber-Johnson is a trusted name in the industry; long known as the go-to partner for major rugged computer OEMs. As a pioneer in design innovation — receiving numerous awards and accolades as an industry leader — Gamber-Johnson has been the preferred choice for decades.

Harness the power of Gamber-Johnson’s laser-like focus on innovation with the perfect mounting solution for your lift vehicle.





MOUNTING SOLUTIONS FOR EVERY LIFT VEHICLE

Secure your tablets and equipment with our superior mounting solutions, for ultimate peace of mind. We offer a wide range of turnkey solutions that are configurable for your material handling vehicle's specific make and model. Our ergonomic solutions enhance driver efficiency, reduce installation time, speed up operations, and improve overall workplace safety. To narrow down the best solution for your fleet begin by asking yourself these five important questions:

1. WHAT DEVICE IS BEING MOUNTED?

Identifying your device ensures that you get the correct dock or cradle to support your specific need and desired connectivity.

2. WHAT MODEL VEHICLE IS THE DEVICE BEING MOUNTED TO?

Knowing the make and model of your vehicle will allow us to recommend the best location and corresponding product needed to mount your device.

3. WHAT IS THE CAB TYPE?

Determine whether it is an open or enclosed cab.

4. WHAT IS THE VEHICLE'S VOLTAGE?

By knowing the voltage or power requirement of your lift vehicle we can ensure that you get the appropriate power supply for your specific need.

5. WHAT ACCESSORIES ARE BEING MOUNTED?

Understanding your accessory needs will allow us to build the best material handling solution for your team.





CRADLES AND DOCKING STATIONS

Secure your tablets and other devices with a Gamber-Johnson cradle or docking station. Cradles keep your device safe and secure without port access, while docking stations replicate the device's ports for easy and secure access.

Either way - we have a solution that will meet your needs in the most secure, ergonomic configuration possible.



ZX80

OPTIONS:

- Cradle, No RF
- Cradle, Tri RF
- Dock, No RF
- Dock, Tri RF

FEATURES:

- Getac certified electronics
- Slim profile takes up minimal mounting space
- Built-in stylus holder provides convenient storage and access for stylus tools
- Docking station accommodates the ZX80 tablet's extended battery and 2-point hand strap accessories
- Patented slam-latch system allows for easy, one-handed docking/undocking
- Key lock (keyed alike) for theft deterrence
- Composite design for reduced weight and durability
- VESA 75mm mounting pattern for compatibility with a variety of Gamber-Johnson motion attachments
- Optional Tri RF (SMA) pass-through
- 3-year limited warranty



ZX10

OPTIONS:

- Cradle, No RF
- Cradle, Tri RF
- Cradle, No RF (incl 120W Getac adapter)
- Cradle, Tri RF (incl 120W Getac adapter)
- Dock, No RF
- Dock, Tri RF

FEATURES:

- Compatible with Getac ZX10 tablet computer
- Docking station accommodates the tablet's card reader, extended battery, hand strap, stylus, barcode reader, and hard carry handle
- Access to all tablet control buttons and ports while the tablet is docked
- Docking connector gasket provides additional water resistance and protection
- Downward-facing powered dual USB ports (1.5A ea); integrated cable restraint system
- Floating docking connector for reliable connectivity in rugged environments
- One-hand docking and release for efficient use all day long
- Key lock (keyed alike) for theft deterrence
- Gamber-Johnson rugged construction and reliability
- VESA 75mm mounting pattern
- 3-Year Limited Warranty



UX10

OPTIONS:

- Cradle, No RF
- Cradle, Tri RF
- Dock, No RF
- Dock, Tri RF

FEATURES:

- Compatible with the Getac UX10 tablet computer
- Docking station design accommodates rotating hand strap, extended battery, hard handle, RFID reader, and smartcard reader (sold separately)
- Easy to use one-handed operation:
 - Insert bottom of computer into the docking station, push top of computer against latch button until latch engages
 - To remove, push up on latch-button with thumb to disengage and pull computer out of the docking station
- Floating POGO docking connector for reliable docking activation
- Docking tabs align tablet during insertion
- Key lock (keyed alike) for theft deterrence
- Downward-facing I/O ports; integrated cable strain relief and cable management system
- Rounded edges to enhance personal safety
- Gamber-Johnson rugged construction and reliability
- VESA 75mm mounting pattern
- 3-Year Limited Warranty

F110 G6/G7

OPTIONS:

- Cradle, No RF
- Cradle, Tri RF
- Dock, No RF
- Dock, Tri RF
- Dock, Powered RS232, No RF
- Dock, Powered RS232, Tri RF

FEATURES:

- Compatible with F110G6 tablet and all previous versions
- One-hand docking and release for efficient use all day long
- Downward-facing I/O ports; cable strain relief and cable management system
- Accommodates mag strip reader and hand strap without shoulder strap attachment (sold separately)
- Floating POGO pin style docking connector for reliable connectivity even in extreme environments
- Access to all tablet control buttons and ports while the tablet is docked
- Key lock (keyed alike) for theft deterrence
- Composite/aluminum design for reduced weight and durability
- VESA 75mm mounting pattern
- 3-Year Limited Warranty



F120

OPTIONS:

- Cradle, No RF
- Cradle, Quad RF
- Dock, No RF (Lite port)
- Dock, Quad RF (Lite port)
- Dock, No RF (Full port)
- Dock, Quad RF (Full port)

FEATURES:

- Compatible with the Getac F120 tablet
- Getac certified electronics
- One-hand docking and release for efficient use
- Accommodates the tablet's hard handle, highcapacity battery, smart card reader and slim hand strap accessories
- Allows access to all tablet control buttons while the tablet is docked
- Downward facing rear ports with integrated cable management
- Floating docking connector ensures reliable pogo pin connection in rugged environments
- Built-in stylus holder
- Keyed lock for security
- Full and lite port replication options to align setup to peripheral and budget requirements
- Optional QUAD RF Pass-through
- VESA 75 mounting pattern
- 3-Year Limited Warranty



K120

OPTIONS:

- Cradle
- Cradle, Tri RF
- Dock, No RF
- Dock, Tri RF
- KIT: Dock, No RF (incl 120W Getac adapter)
- KIT: Dock, Tri RF (incl 120W Getac adapter)

FEATURES:

- Designed for the Getac K120 fully rugged tablet
- Easy to use one-handed operation:
 - Insert bottom of computer into the docking station, push top of computer against latch button until latch engages
 - To remove, push up on latch-button with thumb to disengage and pull computer out of the docking station
- Accommodates tablet's rotating hand strap (sold separately)
- Upward-facing I/O ports; integrated cable strain relief and cable management system
- Access to all tablet control buttons and ports while tablet is docked
- Steel guide pins for proper alignment during docking
- Key lock (keyed alike) for theft deterrence
- Rounded edges to enhance personal safety
- Gamber-Johnson rugged construction and reliability
- VESA 75mm mounting pattern
- 3-Year Limited Warranty





OVERHEAD GUARD LEG MOUNTS

Mount any device securely to forklift overhead guard legs. Gamber-Johnson Universal Mount attaches to all popular forklift guard legs.



Getac P/N: 590GBL001263



Getac P/N: 590GBL001477

GUARD LEG MOUNT WITH LOCKING SWING ARM MOUNT

The locking swing arm keeps your devices positioned where you want them, and the one-handed operation allows for easy adjustability.

- Mounting Versatility: Mount sandwiches the overhead guard leg and allows user to position the device at the desired height position.
- Locking Swing Arm locks devices in place and can be easily adjusted with one hand position.

CLAM SHELLS

Our Clam Shell line is Gamber-Johnson's staple product when it comes to extending the usability of technology into the mobile world of material handling. Easily attach any device, dock, cradle, or interface plate with the multiple hole patterns featured on the product. Our Clam Shells work to tailor to individual operator comfort and safety by providing a wide range of adjustments for optimal viewing of a device, improved visibility, and proximity to the operator.



Getac P/N: 592GUK000048
Clam Shell with Small Backer Plate



Getac P/N: 592GUK000021
Dual Clam Shell with Small Backer Plate



Getac P/N: 590GBL000183
Clam Shell with Large Backer Plate

Getac P/N: 590GBL000052
Dual Clam Shell with Large Backer Plate



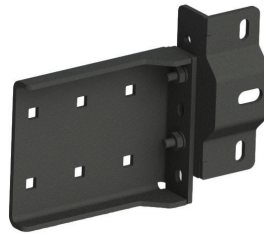
Getac P/N: 592GUK000013
Dual Clam Shell with Arm & Small Backer Plate

Getac P/N: 590GBL000045
Dual Clam Shell with Arm & Large Backer Plate

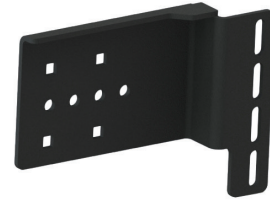


CAB MOUNTS

Secure your valuable tablets and devices right in the cab of your material handling vehicle using one of our reliable OEM specific mounts. Perfectly suited to tailor your workspace to the most efficient, ergonomic, and secure configuration, all while protecting your valuable assets and lift vehicle operators.



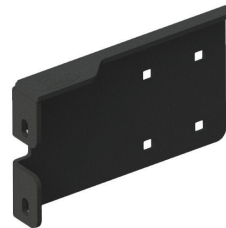
Getac P/N: 590GBL000773
Toyota Cab Latch Mount for
Electronic Hydraulics



Getac P/N: 590GBL000774
Toyota Cab Mount



Getac P/N: 590GBL000161
Clamp Bracket Adapter



Getac P/N: 590GBL001264
Linde E30 Latch Mounting
Bracket



Getac P/N: 590GBL001265
Yale Hyster 40/70 Cab Mount



Getac P/N: 590GBL000322
Yale/Hyster Electric Bracket

HORIZONTAL EXTENSION

Increase your usable mounting space with our horizontal extension giving you more room to mount a total solution. Compatible with all Gamber-Johnson's roll formed and tube clamp brackets to ensure secure fitment to any overhead guard leg profile.



Getac P/N: 592GUK000019
Horizontal Extension Bar

TUBE CLAMP MOUNTS

Expand your mounting location options by connecting your solution to multiple sizes of cylindrical poles, handles, or tubular style overhead guard legs. Adapt a Clam Shell product to finalize the total solution.



Getac P/N: 590GBL000388

Zirkona 2" to 3" Pole Mount with VESA 75mm Mounting Plate

Getac P/N: 590GBL001266

Zirkona 2" to 3" Pole Mount with AMPS/NEC Mounting Plate



Getac P/N: 590GBL000389

Zirkona 3/4" to 1 7/8" Pole Mount with VESA 75mm Mounting Plate

Getac P/N: 590GBL001267

Zirkona 3/4" to 1-7/8" Pole Mount with AMPS/NEC Mounting Plate

ROLL FORM BRACKETS

We have the ideal products for every mounting situation; including lift vehicles that have roll formed overhead guard legs. These brackets conform perfectly to various roll formed profiles ultimately creating a solid foundation to adapt our Clam Shell product line.

Pair with with **DUAL CLAM SHELL MOUNT (PG.7)** to complete your solution



Getac P/N: 592GUK000020

For Yale/Hyster, Crown, & others

Getac P/N: 590GBL001268

For Clark Models

Getac P/N: 590GBL000130

For Jungheinrich / CAT / Toyota

Getac P/N: 590GBL000193

For Linde Models EV-30 & EV40

Zirkona

DIAMOND PLATE MOUNTS

When it comes to mounting lightweight devices turn to Gamber-Johnson's diamond plate mounts for a reliable solution. Multiple product offerings to interface your device with various hole patterns and ample adjustability to accommodate operator comfort and ease of use.



Getac P/N: 590GBL001269

Zirkona 4" Diamond Plate with Large Joiner & AMPS/NEC Plate

Getac P/N: 590GBL000326

Zirkona 4" Diamond Plate with Large Joiner & VESA 75mm Plate



Getac P/N: 590GBL000658

Zirkona, 4" Diamond Plate with 6" Medium Dog-Bone & AMPs Plate

Getac P/N: 590GBL000658

Zirkona, 4" Diamond Plate with 6" Medium Dog-Bone & VESA 75 mm Plate



OVERHEAD GUARD MOUNTS

Increase your operator's forward visibility by tucking your device up and out of the way. Directly mount from the overhead guard using various ergonomic options that best fit a wide variety of operator needs and preferences.

ADJUSTABLE OVERHEAD GUARD BAR-TALL



Adjustable mount designed with extended height and the flexibility to attach to angled or vertical cross bars on a variety of OEM overhead guards. Positions and secures your device to maximize operator workspace, increase safety, and ergonomics.

- Positions device at the forward most point of the cross bar allowing for a secure and ergonomic position.
- Attaches to angled or vertical forward cross bars, from 0-90 degrees, allowing the mount to attach to a variety of OEM overhead guards.
- Vertical adjustability allows the end user to position the device to their specific need.



Getac P/N: 590GBL000651
Tall Adjustable Overhead
Guard Bar-short



Getac P/N: 590GBL000333
Tall Overhead Bar Mount



Getac P/N: 590GBL000046
Vertical Extension Bar Vertical
Extension Bar



Getac P/N: 592GUK000022
Overhead Guard Mount with
Single Clam Shell



PERIPHERAL MOUNTS

POWER SUPPLIES, WIRING KITS & MOUNTS

Protect and power your valuable devices by pairing them with a clean, stable power source to guarantee functionality and longevity. Combine with a Gamber-Johnson Wiring Kit and Power Supply Mount for a professional look and quick installation.

LIND ISOLATED POWER SUPPLY FOR GETAC



Getac P/N: 592GUK000016
12-32V Isolated DC/DC
forklift adapter

Getac P/N: 592GUK000017
20-60V Isolated DC/DC
forklift adapter

Getac P/N: 592GUK000018
70-110V Isolated DC/DC
forklift adapter



Getac P/N: 590GBL000327
Power Supply Clamp



Getac P/N: 590GBL000513
Wiring Kit

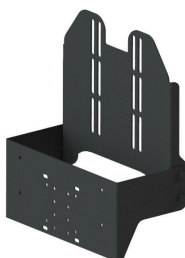
KEYBOARD MOUNTS

Configure your keyboard for ultimate ease of use and the fastest possible access with our large selection of Keyboard Mounts. With an ergonomic angle that meets user needs, working on the keyboard in the field can be more streamlined and reliable than ever before.



Getac P/N: 590GBL000388
Tablet Keyboard Mount

Getac P/N: 590GBL001266
Tablet Keyboard Mount - Tall Backplate



Getac P/N: 590GBL000388
Vertical Tablet Keyboard Mount

Getac P/N: 590GBL001266
Vertical Tablet Keyboard Mount - Tall Backplate



Getac P/N: 590GBL000608
Rugged Lite Keyboard - English US

Getac P/N: 590GBL000609
Rugged Lite Keyboard - GERMAN

Getac P/N: 590GBL000610
Rugged Lite Keyboard - French

Getac P/N: 590GBL000611
Rugged Lite Keyboard - Spanish

Getac P/N: 590GBL000612
Rugged Lite Keyboard - French Canadian

Getac P/N: 590GBL000613
Rugged Lite Keyboard - English UK

Getac P/N: 590GBL000614
Rugged Lite Keyboard - Thailand

Getac P/N: 590GBL000615
Rugged Lite Keyboard - Arabic



Getac P/N: 590GBL000388
Number Pad Bracket



Getac P/N: 590GBL001414
Rugged Lite backlit keyboard & quick release
keyboard cradle - Spanish

Getac P/N: 590GBL000785
Rugged Lite backlit keyboard & quick release
keyboard cradle - German

Add note to state other languages available.

PERIPHERAL MOUNTS

HANDHELD SCANNER MOUNTS

Safeguard handheld scanners from accidental drops and catastrophic damage by housing your device with the right mount to fit your operation's needs.



Getac P/N: 590GBL001273
Scanner Pocket Mount
with Small Back Plate



Getac P/N: 590GBL000387
Scanner Pocket Tablet Mount



Getac P/N: 590GBL001271
Pistol Grip Scanner Bracket



Getac P/N: 590GBL001272
Flat Surface Magnet Mount
with Scanner Holder

Getac P/N: 590GBL001280
Zirkona, Pistol Grip Scanner Mount

SAFETY LIGHT MOUNTS

Mount safety lights to present a visual alert to help increase warehouse safety, minimize the risk of accidents, and improve visible awareness of approaching lift vehicles.



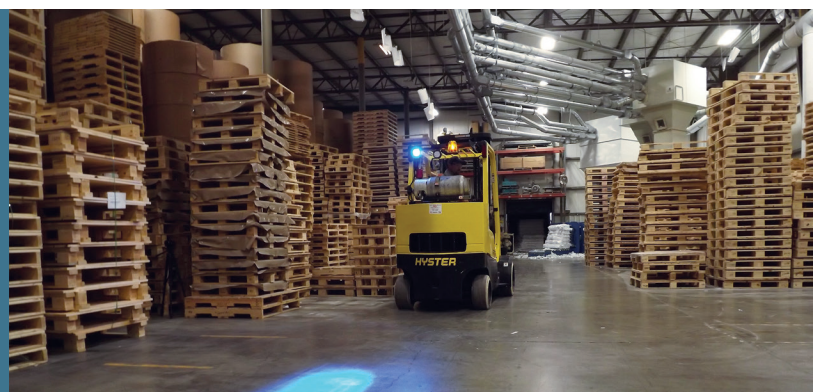
Getac P/N: 590GBL001274
Single Light Bracket



Getac P/N: 590GBL001276
Forklift Light Mount



To learn more about our
total material handling
solutions, visit
GETAC.COM

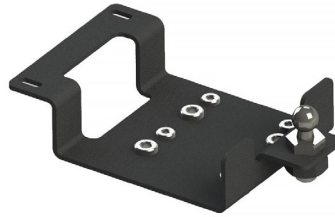


PRINTER MOUNTS

Continue to expand from a desk to a mobile work environment by creating a secure and accessible way to mount rugged mobile printers.



Getac P/N: 590GBL001278
Zebra ZQ630/QLN420 Printer Bracket



Getac P/N: 590GBL001279
Zebra ZQ620 Printer Bracket

READY TO MAKE A PURCHASE?

Contact your regional Getac Sales Representative via our website:
www.getac.com



WWW.GAMBERJOHNSON.COM



getac.com

**GETAC
SELECT**

For further information please contact your regional Getac sales representative.

V04M11Y25 EMEA